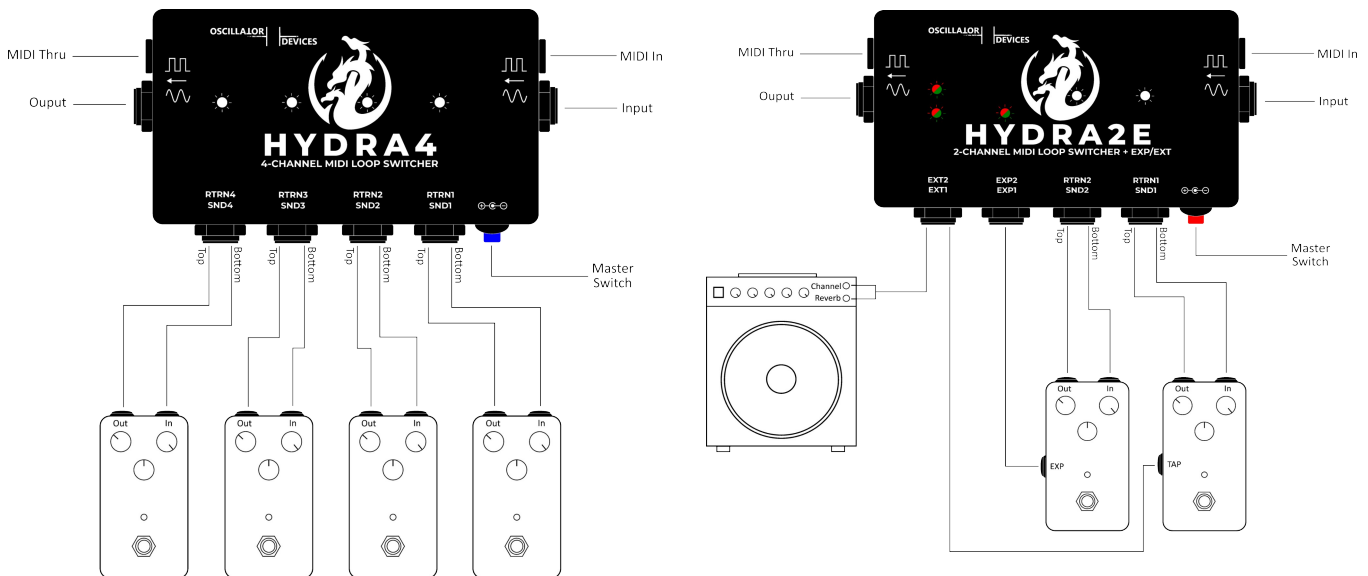


HYDRA



Quick Start



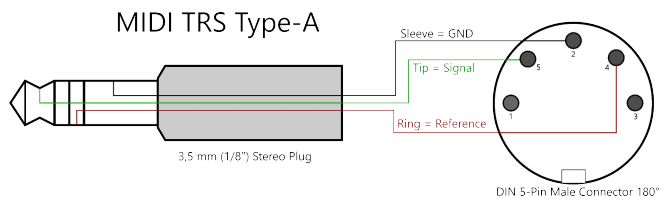
Please disconnect the HYDRA from the power supply before making any connections.

Master Switch

- When pressed shortly while **HYDRA** is turned on, the loops are turned on and off in any possible combinations.
- When held while **HYDRA** is turned on, it enters preset save mode.
- When held while the **HYDRA** turns on, it enters MIDI channel mode

MIDI In/Thru

Two 1/8" Mini TRS Type A MIDI connections. These are according to MIDI TRS standard Type A.



Presets

All **HYDRA** devices support 14 user presets. When a preset is saved, the current state of the loop is saved along with the last command that was called for EXP and EXT. To recall a preset, send the corresponding PC message. To save a preset with the Master Switch, proceed as follows:

1. Press and hold the Master Switch while the **HYDRA** is turned on.
2. The LED of the Master Switch starts to flash. Press the Master Switch according to the number of the preset you wish to save the current state to (e.g. twice for preset 2). The **HYDRA** acknowledges this by emitting short flashing pulses corresponding to the number of the preset.
3. Once the desired preset number is set, press the Master Switch and hold it down. The LED will stay lit for approx. 1s, then gives a short flash and stays lit. The preset is now saved.

To cancel the preset saving phase, press the button more than 14 times.

ATTENTION: Preset 0 is the startup state that is called when the device is switched on.

MIDI Channel

To change the MIDI channel using the Master-Switch, follow the steps below:

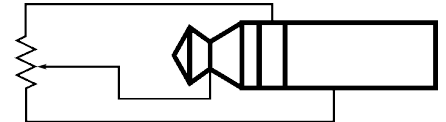
1. Disconnect the **HYDRA** from the power supply
2. Press and hold the Master Switch while connect the **HYDRA** to the power supply.
3. The LED of the Master Switch starts to flash. Press the Master Switch according to the number of the MIDI channel you wish to set (e.g. twice for MIDI channel 2). The **HYDRA** acknowledges this by emitting short flashing pulses corresponding to the number of the desired MIDI channel.
4. Once the desired MIDI channel is set, press the Master Switch and hold it down. The LED lights up for approx. 1s, then gives a short flash. The **HYDRA** automatically restarts and reacts to the new MIDI channel.

MIDI commands (Loops)

CC					Function				
Loop 1	Loop 2	Loop 3	Loop 4	#	No clickless switching	#	Clickless switching (short)	#	Clickless switching (long)
20	21	22	23	00	Loop deactivated	20	Loop deactivated (clickless)	50	Loop deactivated (clickless long)
				01	Loop activated	21	Loop activated (clickless)	51	Loop activated (clickless long)
				02	Toggle Loop (On → Off, Off → On)	22	Toggle loop (clickless)	52	Toggle loop (clickless long)
				03	Mute Loop				
				04	Unmute Loop				

MIDI commands (EXP)

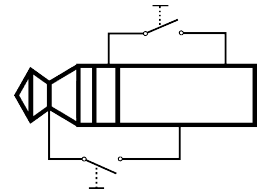
EXP1/EXP2: Two 1/4" Stereo TRS connectors that function as two MIDI controllable expression pedals. Make sure to use them only for standard 5V expression inputs. **Do not exceed 5V and do not apply negative voltages to any of these connectors.**



CC			Function
EXP1	EXP2	#	
22	28	0-127	Expression out from heel (0) to toe (127)

MIDI Commands (EXT)

EXT1/EXT2: Two 1/4" Stereo TRS connectors that functions as MIDI controllable switches. Each connector has two switches. One that closes between *tip* and *sleeve* and one that closes between *ring* and *sleeve*. These are Solid State Relays that can switch up to +60V.



CC				Function							
EXT1		EXT2		#	Basic functions and Normally open	#	Normally Closed	#	Toggle		
Tip	Ring	Tip	Ring								
34	40	46	52	00	Set „Open“						
				01	Set „Closed“						
				02	Single Pulse NO						
				03	Single Pulse NC						
				04	Toggle (Open → Close/Close → Open)						
				10	Pulse NO MIDI clock 1/4 notes			30	Pulse NC MIDI clock 1/4 notes	50	Toggle MIDI clock 1/4 notes
				11	Pulse NO MIDI clock 1/8 notes			31	Pulse NC MIDI clock 1/8 notes	51	Toggle MIDI clock 1/8 notes

For the complete set of functions and commands refer to the full user manual at <https://oscillatordevices.com/hydra>